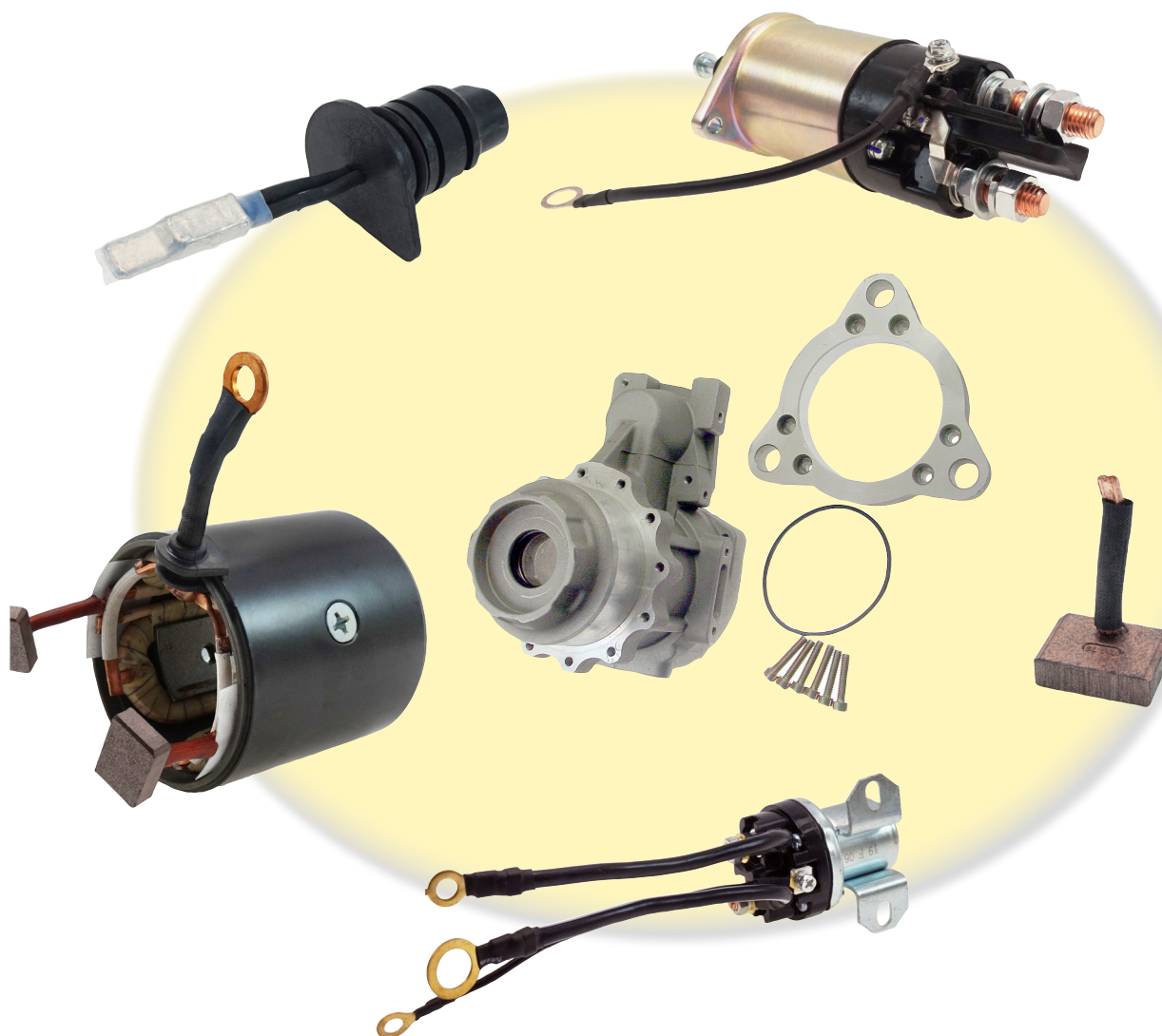


Delco 39MT PLGR Parts



2F, NO. 38, LANE 80, SEC. 3, NAN KANG ROAD, TAIPEI 11570 TAIWAN
TEL :886-2-2785-0600 FAX :886-2-2785-0651
E-MAIL: tsai@johnica.com
<http://www.johnica.com>

JOHNICA to Page Number**LESTER to JOHNICA Page Number****DE Housing**

JOHNICA No.	Pg.
1000-6205	1
1000-6228	1
1000-6301	1
1000-8129	1
5100-1201	1
5100-1202	1
5100-1205	1
5100-1206	1
5100-1207	1
5314-1001	1
5401-1002	2
5402-1001	2
5402-1002	2
5402-1003	2
5406-1001	2
5500-124	2
5501-1404	2
5700-1001	2
5700-1002	2
6690-155	2
6690-156	2
6700-1808	2
6700-1809	3
6710-1001	3
6801-152	3
6801-160	3
6900-125	3
7101-1514	3
7105-1001	3
7619-1001	3
7622-1002	3
8401-1382	3
8402-8235	3

LESTER	JOHNICA No.	Pg.
6802	5100-1207	1
6803	5100-1206	1
6804	5100-1205	3
6806	5100-1205	3
6812	5100-1207	3
6814	5314-1001	1
6817	5100-1201	4
6819	5100-1205	1
6822	5314-1001	3
6823	5314-1001	1
6824	5100-1205	3
6825	5100-1205	3
6826	5100-1202	2
6827	5100-1201	4
6837	5314-1001	2
6851	5100-1207	2
6852	5100-1201	2
6853	5100-1201	2
6856	5314-1001	3
6907	5314-1001	3
6911	5100-1205	3
6912	5314-1001	3
6913	5100-1207	3

OEM to JOHNICA Page Number

DE Housing

OEM	JOHNICA No.	Pg.	OEM	JOHNICA No.	Pg.
1114011	5100-1201	4	19011507	5100-1205	1
1114012	5100-1201	4	19011509	5100-1201	2
8200022	5100-1207	2	19011511	5100-1206	1
8200027	5100-1202	2	19011512	5100-1202	2
8200032	5100-1201	2	19011516	5100-1205	3
8200033	5100-1205	3	19011518	5314-1001	3
8200034	5100-1205	1	19011519	5314-1001	3
8200039	5100-1201	2	19011521	5100-1205	3
8200040	5314-1001	3	19011522	5100-1205	1
8200041	5100-1205	1	19011523	5100-1201	2
8200050	5314-1001	3	19011524	5100-1206	1
8200090	5314-1001	3	19011531	5100-1207	1
8200210	5314-1001	3	19011531	5100-1207	3
8200290	5314-1001	3			
8200330	5314-1001	2			
8200409	5314-1001	1			
8200410	5100-1205	1			
8200430	5100-1201	2			
8200431	5100-1201	2			
8200433	5314-1001	3			
8200435	5314-1001	1			
8200450	5100-1202	2			
8200604	5314-1001	3			
8200628	5314-1001	1			
8200640	5314-1001	1			
8200712	5100-1201	2			
8200724	5314-1001	2			
8200817	5314-1001	3			
8201140	5314-1001	1			
10461758	5100-1206	1			
19011500	5100-1207	3			
19011505	5100-1207	1			
19011505	5100-1207	3			
19011506	5100-1205	3			

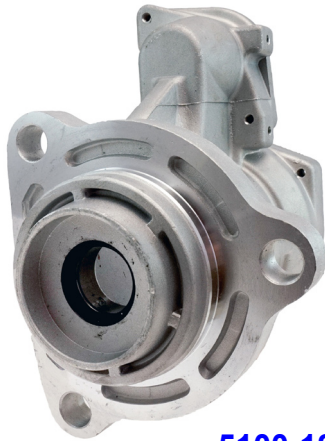
38MT / 39MT PARTS



1000-6205

BEARING

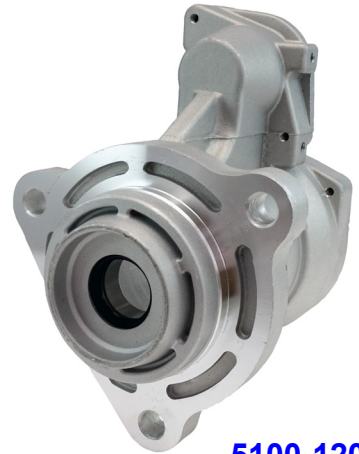
Delco 38 / 39MT Series PLGR Starters
OEM: 904983
Dim: 25mm ID x 52mm OD x 15mm W



5100-1201

DRIVE END HOUSING

For Delco 39MT Series PLGR Starters
OEM: 10512028
Lester: 6817, 6827, 6852, 6853, 6993, 6994



5100-1206

DRIVE END HOUSING

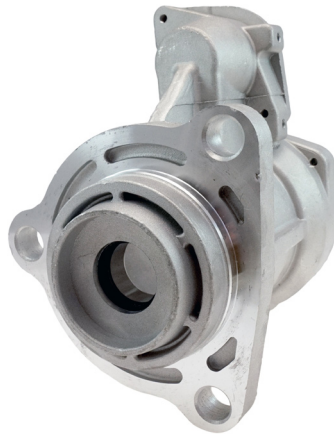
For Delco 39MT Series PLGR Starters
OEM: 10512030
Lester: 6803, 6813, 6820, 6830



1000-6228

BEARING

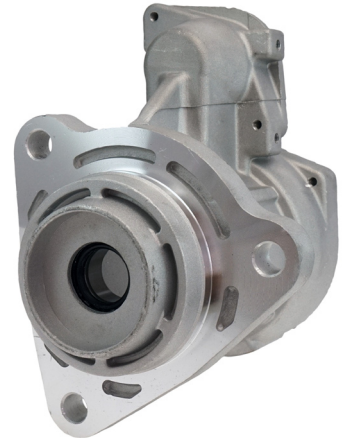
Delco 38 / 39MT Series PLGR Starters
Dim: 28mmID x 58mmOD x 16mmW



5100-1202

DRIVE END HOUSING

For Delco 39MT Series PLGR Starters
OEM: 10512029
Lester: 6805, 6811, 6815, 6821, 6826, 6836



5100-1207

DRIVE END HOUSING

For Delco 39MT Series PLGR Starters
OEM: 10512032
Lester: 6816, 6907, 6914



1000-6301

BEARING

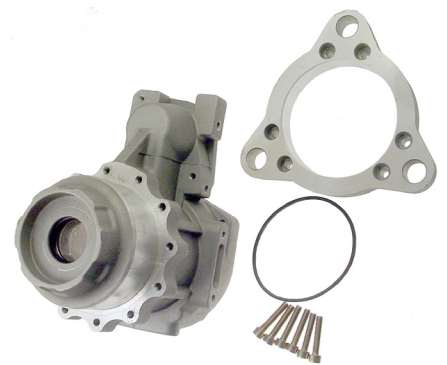
Delco 39MT Series PLGR Starters
Dim: 12mmID x 37mmOD x 12mmW



5100-1205

DRIVE END HOUSING

For Delco 39MT Series PLGR Starters
OEM: 10512027
Lester: 6804, 6806, 6819, 6824, 6825, 6829, 6911, 6991



5314-1001

DRIVE END HOUSING

Delco 2nd Generation 39MT HD Starters
OEM: 10526467
Lester: 6804, 6805, 6806, 6811, 6813, 6814, 6815, 6819...etc.



1000-8129

BEARING

DELCO 38MT/39MT PLGR Starters
Dim: 30mmID x 37mmOD x 11.9mmW
Lester: 6807, 6924

38MT / 39MT PARTS



5401-1002

CLUTCH, CW, 23-SPL

Dim: 144mmL, Bearing 25mmID

Lester: 6804, 6806, 6807, 6809, 6814, 6822, 6856, 6907, 6911...etc.



5406-1001

SPRING -DRIVE PINION

Delco 38 / 39MT Series PLGR Starters



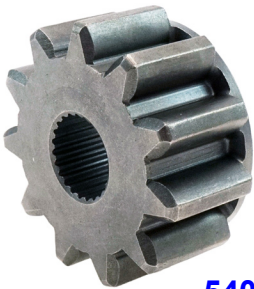
5700-1002

FIELD CASE ASSEMBLY

Delco 39MT Series PLGR Starters

OEM: 10511403

Lester: 6803, 6813, 6826, 6851, 6991...etc.



5402-1001

PINION GEAR, 11-T, CW, 23-SPL

OEM: 10511753

Lester: 6812, 6827, 6829

Dim: 56mmOD x 26mmL



5500-124

SHIFT LEVER

Delco 39MT Series PLGR Starters

OEM: 10511817

Lester: 6812, 6820, 6825, 6829, 6851, 6854, 6911, 6991



6690-155

SOLENOIDS SWITCH ASSEMBLY

Delco 39MT Series PLGR Starters

OEM: 10511408, 10511807, 10525863, 10537417

Lester: 6802, 6811, 6910, 6924...etc.



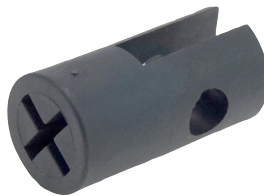
5402-1002

Pinion Gear, 12-T, CW, 18-SPL

OEM: 10511918

Lester: 6828, 6854, 6855

Dim: 42.6mmOD x 26mmL



5501-1404

SUPPORT -SHIFT LEVER

Delco 38 / 39MT Series PLGR Starters

OEM: 10512004

Lester: 6812, 6820, 6824, 6825, 6851, 6854, 6911, 6991



6690-156

SOLENOIDS SWITCH ASSEMBLY

Delco 39MT Series PLGR Starters

OEM: 10511409, 10511799

Lester: 6803, 6813, 6819, 6823, 6826, 6829, 6836, 6851, 6852...etc.



5402-1003

Pinion Gear, 12-T, CW, 23-SPL

OEM: 10511838

Lester: 6816, 6820, 6821, 6836

Dim: 46mmOD x 26mmL



5700-1001

FIELD CASE ASSEMBLY

Delco 39MT Series PLGR Starters

OEM: 10511404

Lester: 6811, 6820, 6830, 6854...etc.



6700-1808

RELAY SWITCH (24V)

Delco 39MT Series PLGR Starters

OEM: 10511415

Lester: 6803, 6813, 6819, 6823, 6826, 6829, 6836, 6837...etc.

38MT / 39MT PARTS



6700-1809

RELAY SWITCH (12V)

Delco 39MT Series PLGR Starters

OEM: 10511414,10535916

Lester: 18970, 19519, 6801, 6802, 6804, 6805, 6806, 6811, 6815...etc.



6900-125

BRUSH HOLDER ASSEMBLY

Delco 39MT Series PLGR Starters

OEM: 8200037, 19011514, 19011517, 19011521,19011530...etc.

Lester: 6802, 6812, 6822, 6853...etc.



7622-1002

STATIONARY GEAR

Delco 39MT Series PLGR Starters



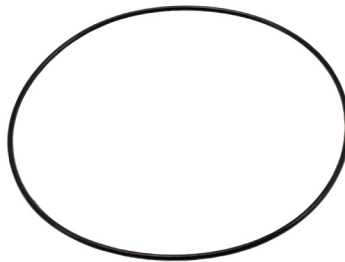
6710-1001

TEMPERATURE SWITCH

Delco 39MT Series PLGR Starters

OEM: 10498158

Lester: 6617, 6660, 6668, 6796, 6821, 6822, 6867, 6896, 6897...etc.



7010-1514

ORING -FIELD CASE

Delco 39MT Series PLGR Starters

Dim: 107mmID x 110mmOD x 1.8mmW



8401-1382

THRU BOLT

Delco 29/38MT Series PLGR Starters

OEM: 10510083, 10515835, 10517147

Lester: 16007, 19982, 3447, 5413...etc.
Dim: M6 x 1.0 x 155mmL



6801-152

BRUSH -FIELD

DELCO 39MT PLGR Starters

OEM: 10511404,19011522...etc.

Lester: 6813, 6817, 6819, 6820...etc.

Dim: 9.5mmT x 32mmW x 22.5mmL
40mmLL



7105-1001

PLUG

Delco 39MT Series PLGR Starters

OEM: 10511747



8402-8235

SCREW

DELCO 39MT PLGR Starters

Dim: M10 x 1.5 x 12mmL



6801-160

BRUSH -FIELD

DELCO 39MT PLGR Starters

Dim: 8mm T x 30mm W x 22.5mm L
49mm LL



7619-1001

LEAD WIRE

Delco 39MT Series PLGR Starters